

# 316 STAINLESS STEEL SHANK HOOKS

---

Used primarily in marine and industrial applications, the 316 Stainless Steel Shank Hook is able to withstand corrosive environments. With the addition of molybdenum, the 316 Stainless Steel has greater corrosion resistance, improved resistance to pitting from chloride ion solutions, and an increased strength at elevated temperatures. Plus, with the electropolishing anti-corrosion treatment, there's no question this will best suit those corrosive or food-safe environments. And while it's ideal for marine or industrial applications, it is still approved for overhead lifting. Made in USA and certified to OSHA and ASME standards.



# 316 STAINLESS STEEL SHANK HOOKS

---

## GRADE

- 50

## FINISH

- Welded, Electropolished, and proof tested

## STANDARDS

- Certified to OSHA and ASME standards

## ATTACHMENT

- Shank

## ORIGIN

- Made in USA

## HOOK TYPE

- Shank Hook

## APPLICATION

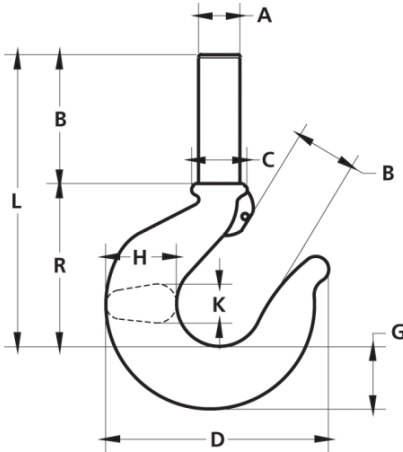
- Custom Lifting

## MATERIAL

- 316 Stainless Steel

# 316 STAINLESS STEEL SHANK HOOKS

## DIAGRAM DRAWINGS



# 316 STAINLESS STEEL SHANK HOOKS

## PRODUCTS SPECIFICATIONS

Product	Dim A (in.)	Dim B (in.)	Dim C (in.)	Dim D (in.)	Dim E (in.)	Dim G (in.)	Dim H (in.)	Dim K (in.)	Dim L (in.)	Dim R (in.)	Lbs. Per Ea.	Working Load Limit (Lbs.)
SHS2	0.560	2.000	0.690	3.000	0.930	0.880	0.880	0.560	5.000	2.310	0.64	1000
SHS3	0.610	2.250	0.750	3.190	1.060	0.880	0.970	0.630	5.500	2.440	0.88	1500
SHS4	0.720	2.500	0.880	3.560	1.130	1.060	1.120	0.720	6.250	2.750	1.10	2000
SHS5	0.840	2.700	1.000	3.880	1.250	1.200	1.310	0.810	6.970	3.060	1.80	2500