



KITO GEARED TROLLEY TS SERIES 7.5t TO 20t

Model TS1B(Tapered flange wheel)

Model TS1Z(Flat flange wheel)

PARTS LIST

IMPORTANT

When ordering replacement parts, please specify the following points:

1. Trolley capacity.
2. Model number in name plate.
3. Correct part names and numbers.
4. Lineal length of hand chain.

NOTE

Every trolley has two kind of track wheel which should be applied separately depending on beam flange type that is tapered or flat.

A FOR MANUAL HOIST CB SERIES

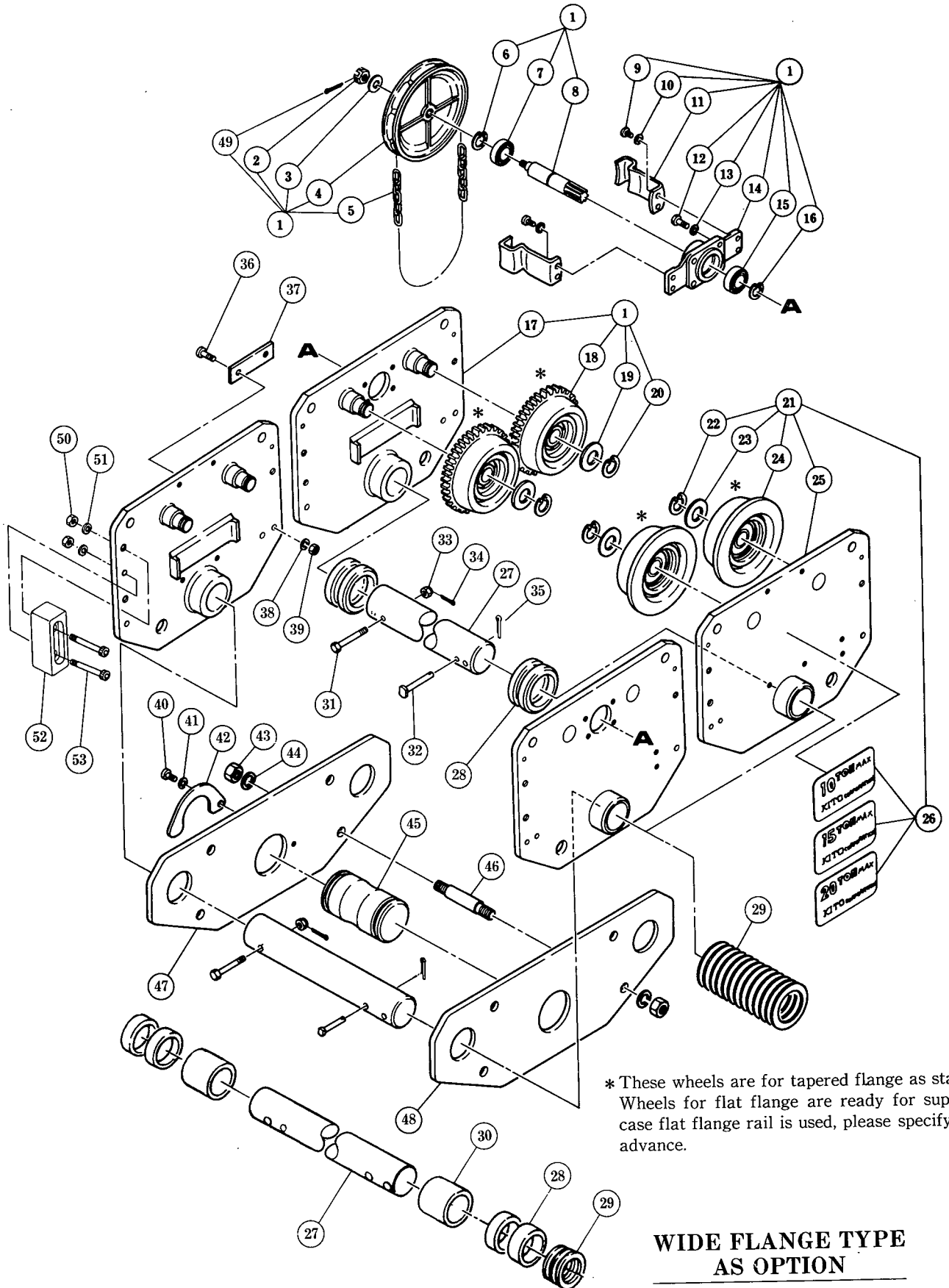
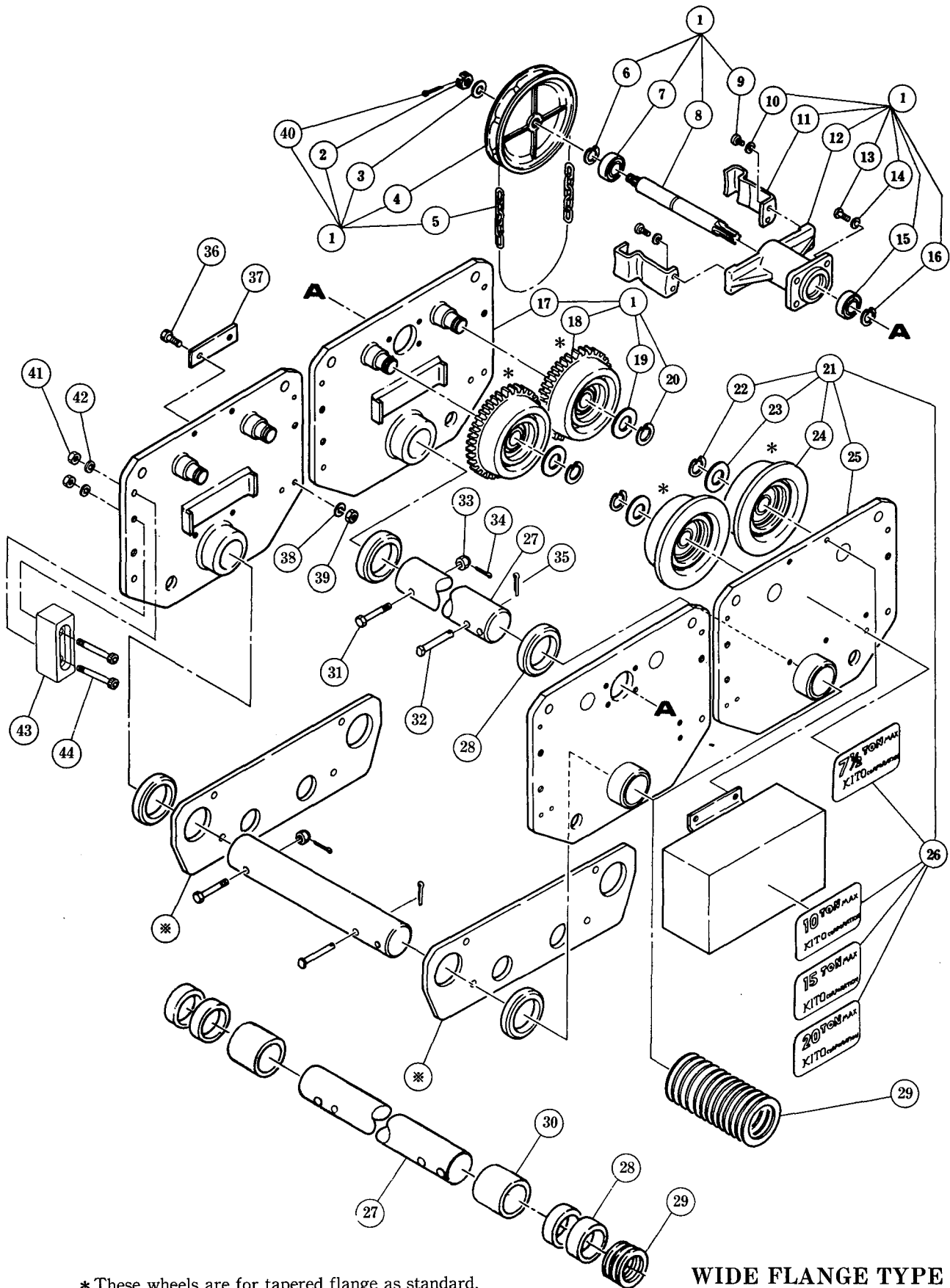


Fig No.	Part No.	Part Name	Nos per Trolley			Capacity			
			7.5',10'	15'	20'	7.5',10'	15'	20'	
1	T3G1111	Side plate G complete set	1	2		1 a			
	T3G151	Slotted nut	1	2		2 a			
	T3G152	Washer	1	2		3 a			
	T3G123	Hand wheel	1	2		4 a			
	CF842	Hand chain	1	2		5 a			
	T3G132	Snap ring	2	4		6 a			
	T3G131	Ball bearing	2	4		7 a			
	T3G127	Pinion	1	2		8 a			
	T3G163	Socket bolt	4	8		9 a			
	E6F854	Spring washer	4	8		10a			
	T3G125	Hand chain guide	2	4		11a			
	M6F575	Socket bolt	4	8		12a			
	M6F576	Spring washer	4	8		13a			
	T3G128	Pinion holder	1	2		14a			
	T3G131	Ball bearing	2	4		15a			
	T3G132	Snap ring	2	4		16a			
	T3G5111	Side plate G assembly	1	2		17a			
	18	T3G1101	Track wheel G assembly	1B*	2B*		18a		
		T3G1108		1Z*	2Z*		18a		
	T3G104	Washer	4	8		19a			
T3G106	Snap ring	4	8		20a				
21	T3G1110	Side plate S complete set	1	2		21a			
	T3G106	Snap ring	4	8		22a			
	T3G104	Washer	4	8		23a			
	24	T3G1102	Track wheel S assembly	2B*	4B*		24a		
		T3G1109		2Z*	4Z*		24a		
	T3G5110	Side plate S assembly	1	2		25a			
T3G801	Name plate B	1	1		26a	26b	26c		
27	MS115	Suspension shaft	1	2		27a			
	MS181		1 {W}	2 {W}		27aw			
28	MS117	Thick spacer	8 9{W}	3 11{W}		28a			
29	MS118	Thin spacer	8	10 8{W}		29a			
30	MS182	Fixing spacer	2 {W}			30a			
31	MS161	Bolt	1	2		31a			
32	MS164	Shaft stopper pin	1	2		32a			
33	T3G154	Slotted nut	1	2		33a			
34	T3G155	Split pin	1	2		34a			
35	T3G157	Split pin	1	2		35a			
36	MS106	Bolt		4			36a		
37	MS105	Connection plate		2			37a		
38	MS174	Spring washer		4			38a		
39	MS173	Nut		4			39a		
40	T3G168	Bolt		1			40a		
41	E6F854	Spring washer		1			41a		
42	T3G145	Key plate		1			42a		
43	E6S081	Nut		8			43a		
44	E6S082	Spring washer		8			44a		
45	T3G144	Suspension shaft		1			45a		
46	T3G143	Stay bolt		4			46a		
47	T3G141	Suspension plate A		1			47a		
48	T3G142	Suspension plate B		1			48a		
49	T3G160	Split pin	1	2		49a			
50	T5G144	Nut	8	8		50a			
51	T5G143	Spring washer	8	8		51a			
52	T5G141	Bumper	4	4		52a			
53	T5G142	Socket bolt	8	8		53a			

Note : {W} indicates wide flange type

* : Symbol Z means track wheel applied to flat flange rail ; symbol B to tapered flange rail.

B FOR ELECTRIC HOIST ES SERIES



* These wheels are for tapered flange as standard,
Wheels for flat flange are ready for supply,
In case flat flange rail is used, please specify it
in advance.

**WIDE FLANGE TYPE
AS OPTION**

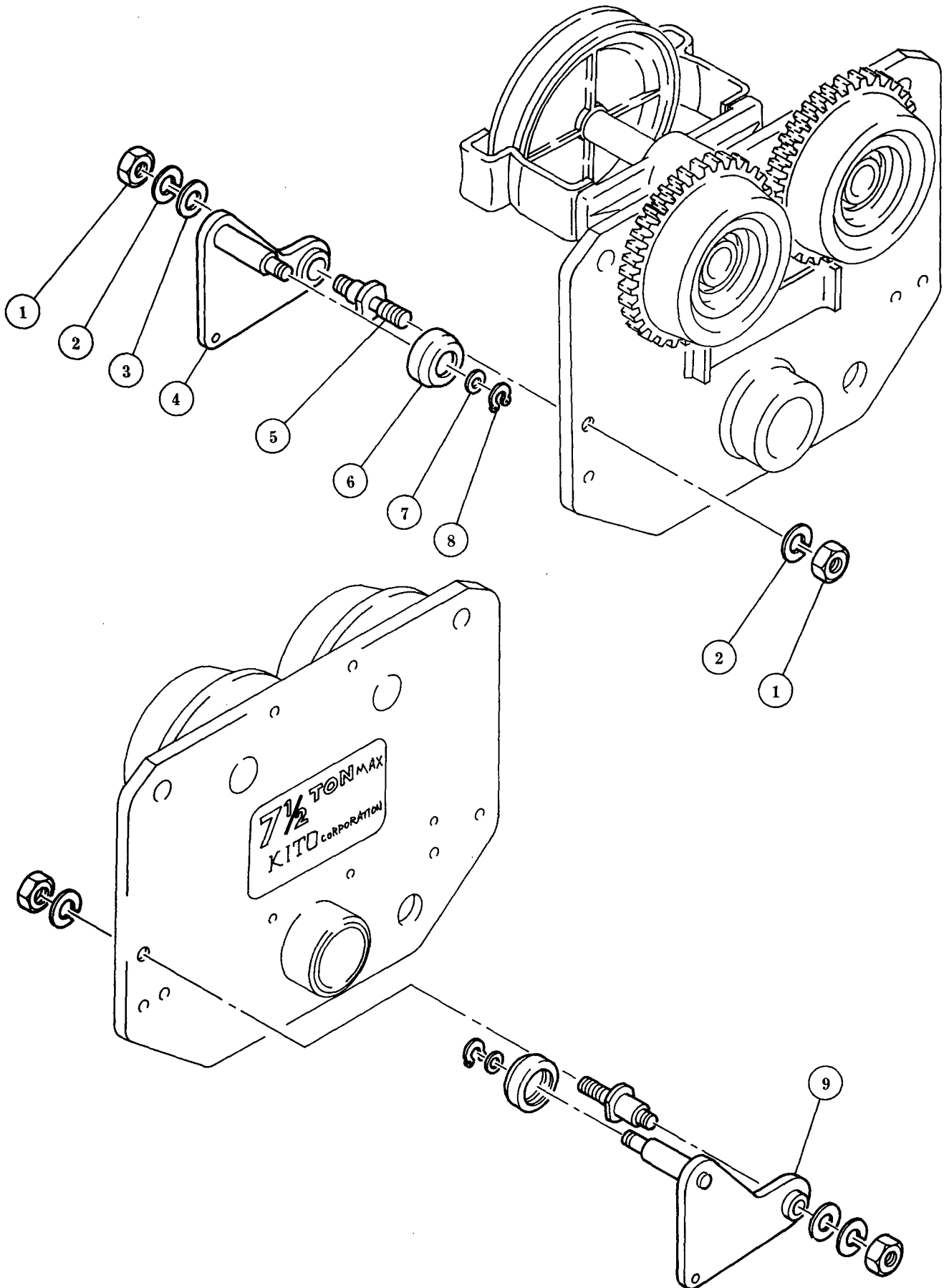
Fig No.	Part No.	Part Name	Nos per Trolley			Capacity			
			7.5', 10'	15'	20'	7.5'	10'	15'	20'
1	T3G1111	Side plate G complete set	1	2	1 a				
2	T3G151	Slotted nut	1	2	P2-2a				
3	T3G152	Washer	1	2	P2-3a				
4	T3G123	Hand wheel	1	2	P2-4a				
5	CF842	Hand chain	1	2	P2-5a				
6	T3G132	Snap ring	2	4	P2-6a				
7	T3G131	Ball bearing	2	4	P2-7a				
8	T3G121	Pinion	1	2	8a				
9	T3G163	Socket bolt	4	8	P2-9a				
10	E6F854	Spring washer	4	8	P2-10a				
11	T3G125	Hand chain guide	2	4	P2-11a				
12	T3G122	Pinion holder	1	2	12a				
13	M6F575	Socket bolt	4	8	P2-12a				
14	M6F576	Spring washer	4	8	P2-13a				
15	T3G131	Ball bearing	2	4	P2-15a				
16	T3G132	Snap ring	2	4	P2-16a				
17	T3G5111	Side plate G assembly	1	2	P2-17a				
18	T3G1101	Track wheel G assembly	1B*	2B*	P2-18a				
	T3G1108		1Z*	2Z*					
19	T3G104	Washer	4	8	P2-19a				
20	T3G106	Snap ring	4	8	P2-20a				
21	T3G1110	Side plate S complete set	1	2	P2-21a				
22	T3G106	Snap ring	4	8	P2-22a				
23	T3G104	Washer	4	8	P2-23a				
24	T3G1102	Track wheel S assembly	2B*	4B*	P2-24a				
	T3G1109		2Z*	4Z*					
25	T3G5110	Side plate S assembly	1	2	P2-25a				
26	T3G801	Name plate B	1	1	26a	P2-26a	P2-26b	P2-26c	
27	MS115	Suspension shaft	1	2	P2-27a				
	MS181		1 [W]	2 [W]	P2-27aw				
28	MS117	Thin spacer	6 7 [W]	12 14[W]	P2- 28a				
29	MS118	Thick spacer	8	16	P2-29a				
30	MS182	Fixing spacer	2 [W]	4 [W]	P2-30a				
31	MS161	Bolt	1	2	P2-31a				
32	MS164	Shaft stopper pin	1	2	P2-32a				
33	T3G154	Slotted nut	1	2	P2-33a				
34	T3G155	Split pin	1	2	P2-34a				
35	T3G157	Split pin	1	2	P2-35a				
36	MS106	Bolt		4		P2-36a			
37	MS105	Connection plate		2		P2-37a			
38	MS174	Spring washer		4		P2-38a			
39	T3G170	Nut		4		P2-39a			
40	T3G161	Split pin	1	2	P2-49a				
41	T5G144	Nut	8	8	41a				
42	T5G143	Spring washer	8	8	42a				
43	T5G141	Bumper	4	4	43a				
44	T5G142	Socket bolt	8	8	44a				
※	Refer to hoist parts list.								

Note : P2 shown in capacity column means page 2.

: [W] indicates wide flange type

* : Symbol Z means track wheel applied to flat flange rail ; symbol B to flat flange rail.

C OPTIONAL PARTS FOR ELECTRIC HOIST ES 7.5T



KITO

URL. <http://www.kito.co.jp>